

# HEALTH SCIENCES: BB TOWER WIRELESS CELLULAR ANTENNAS



UW Environmental Health & Safety (EH&S) provides the following safety information for University personnel who work in or near University locations where wireless cellular antennas are installed.

## SITE INFORMATION

**Address:**

**Carrier (s):** T-Mobile & AT&T

**Antenna type:** Sector/Directional antennas

**Co-locators:** YES

**Location(s):** Rooftop – On parapet

**Site access:** Locked access door

**Last survey date:** October 5, 2021

- This building consists of multiple carriers' sectors with 3-5 antennas per sector.
- All antennas are located on the parapets on the rooftop.
- All measurements were below the limit for general public exposure to radiofrequency energy.

Location	RF Exposure Measurements	Hazard category
Ground level	Less than 0.02% of FCC general public exposure limit.	1
Main roof	Less than 7.93% of FCC occupational exposure limit.	1

## AERIAL VIEW OF THE ANTENNAS

Figure 1 shows an aerial view of the rooftop where the antennas are located.

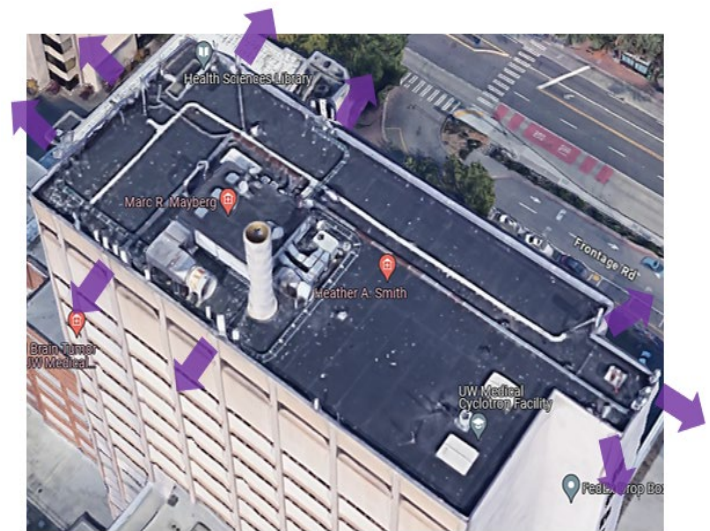


Figure 1: View from the roof.

## SIGNAGE AND BARRIERS

- Yellow CAUTION signs are mounted on the wall right next to the mounted antennas to indicate that RF energy may exceed the FCC limits **directly in front of the antennas** on parapet of the roof (not accessible).
- No additional barriers or stanchions are required at this site.

If your work requires you to be directly in front of a wireless cellular antenna, please contact EH&S Radiation Safety for an additional safety discussion.

# WIRELESS CELLULAR ANTENNA LOCATIONS

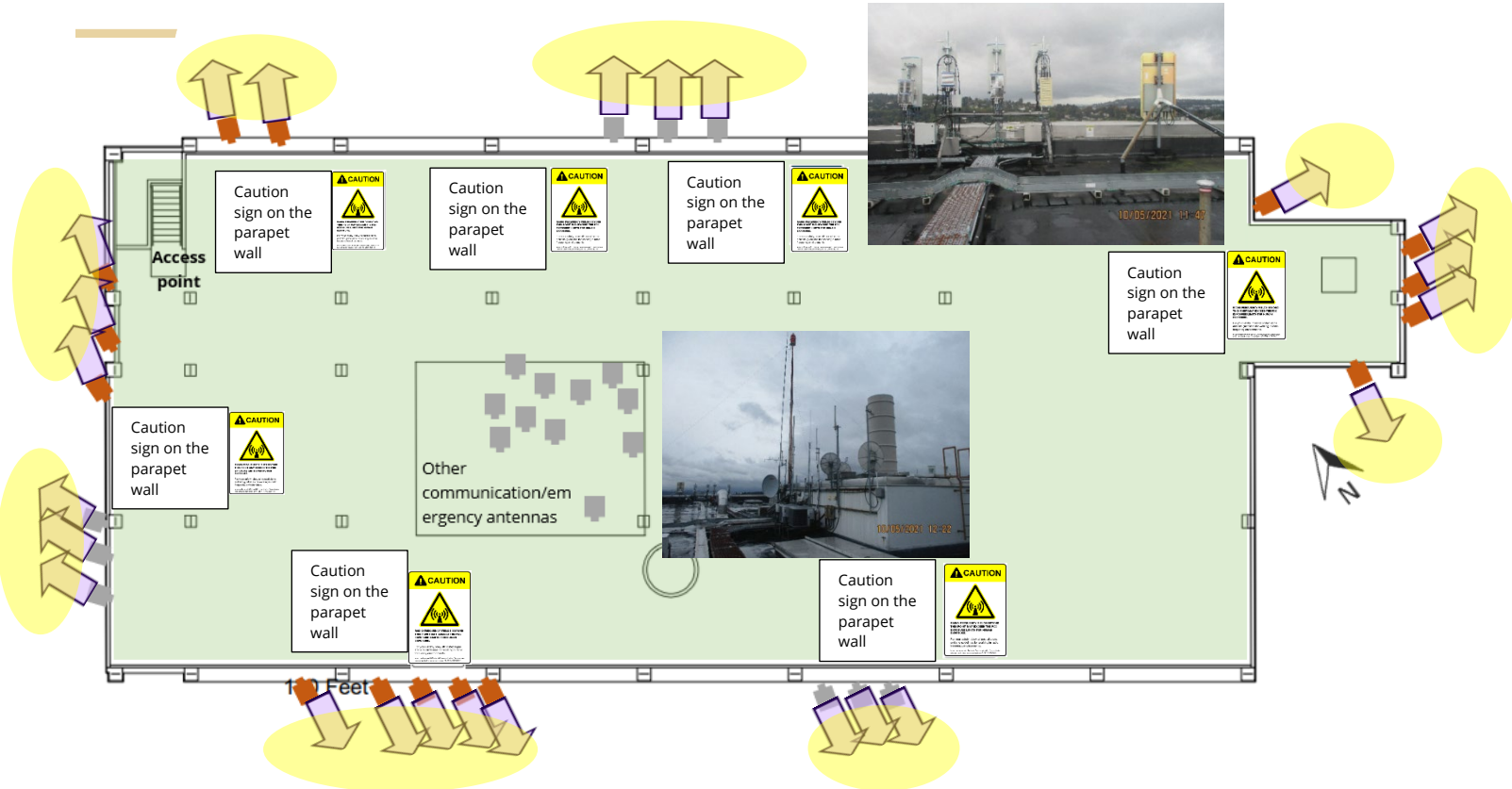


Figure 2: View looking down at the roof of Health Sciences- BB Tower.

Symbols/ Color	Definitions	Signage
	Direction of mounted antenna or directional RF energy	NA
	Mounted antenna/panel	NA
Category 1	Area where RF fields are too weak to cause exposures greater than general public limit <b>SAFE FOR GENERAL PUBLIC</b>	No signage
Category 3	Area where RF fields could potentially be greater than occupational worker limit but less than five times the occupational limit. <b>NOT SAFE FOR GENERAL PUBLIC. RESTRICTED FOR TRAINED WORKERS.</b>	

Table 1: Symbols and color legends, definitions and required posting.

Visit the [Radiofrequency: Wireless Cellular Antennas](#) page on the EH&S website for more information.

Contact EH&S at 206.543.0463 or [radsaf@uw.edu](mailto:radsaf@uw.edu) with questions.