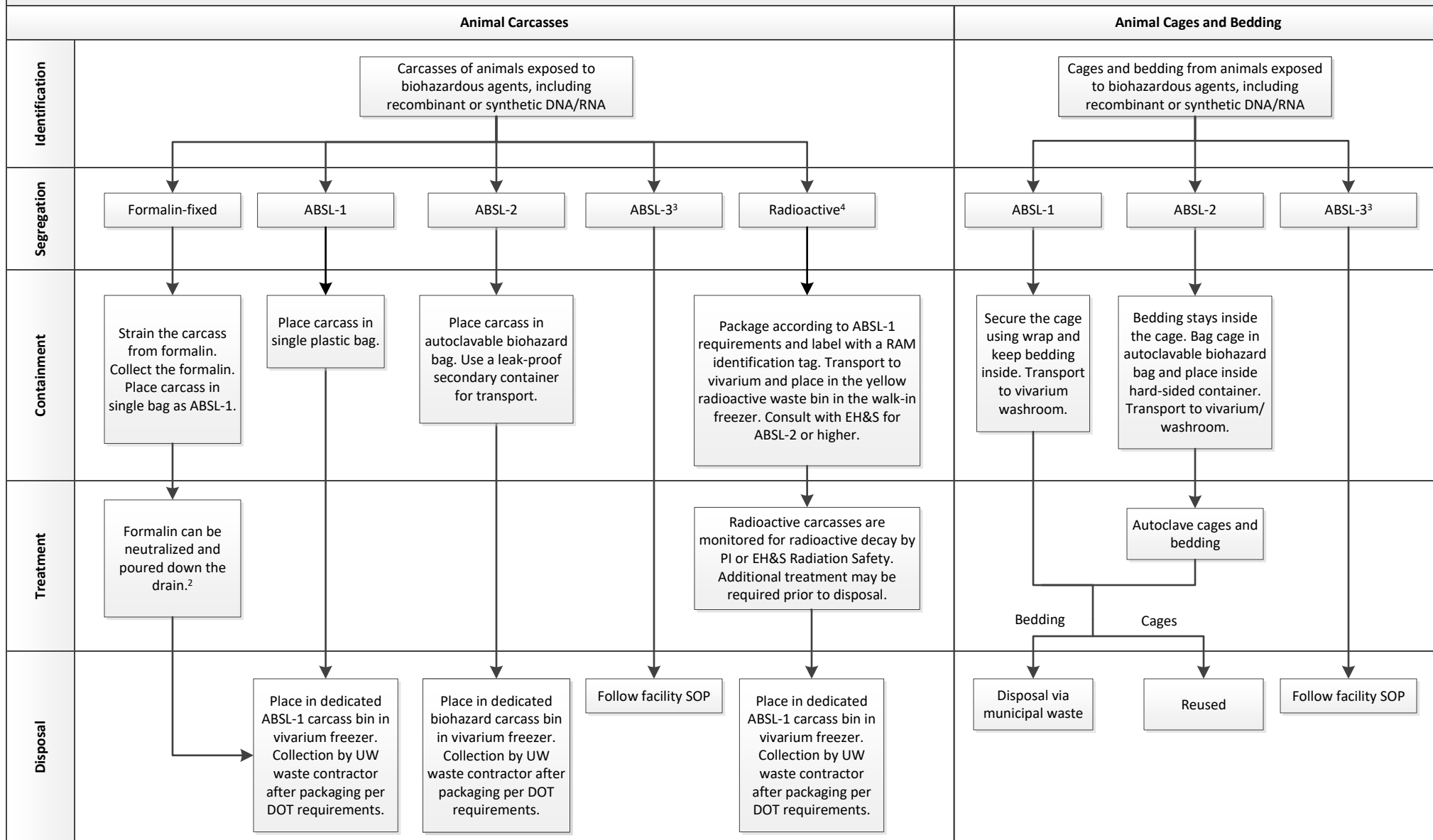


## University of Washington Biohazardous Waste Streams Animal Research Waste<sup>1</sup>



**For vivarium specific procedures or to request to bring non-DCM animals to a vivarium for disposal, contact the [Department of Comparative Medicine Facility Supervisor](#).**

<sup>1</sup>This flow chart is not inclusive of all animal species. For non-research animals, such as teaching lab dissection animals and museum specimens, disposal via municipal waste may be acceptable. Contact EH&S Biosafety at ehsbio@uw.edu and UW Recycling at recycle@uw.edu or 206-685-2811.

<sup>2</sup>Guidance on formalin neutralization: <https://www.ehs.washington.edu/chemical/chemical-treatment-and-recycling>

<sup>3</sup>ABSL-3 waste will be handled in centralized vivarium. Follow facility specific SOPs.

<sup>4</sup>This waste stream only covers short-lived isotopes. For long-lived isotopes, contact EH&S Radiation Safety at radsaf@uw.edu or 206-543-0463.

