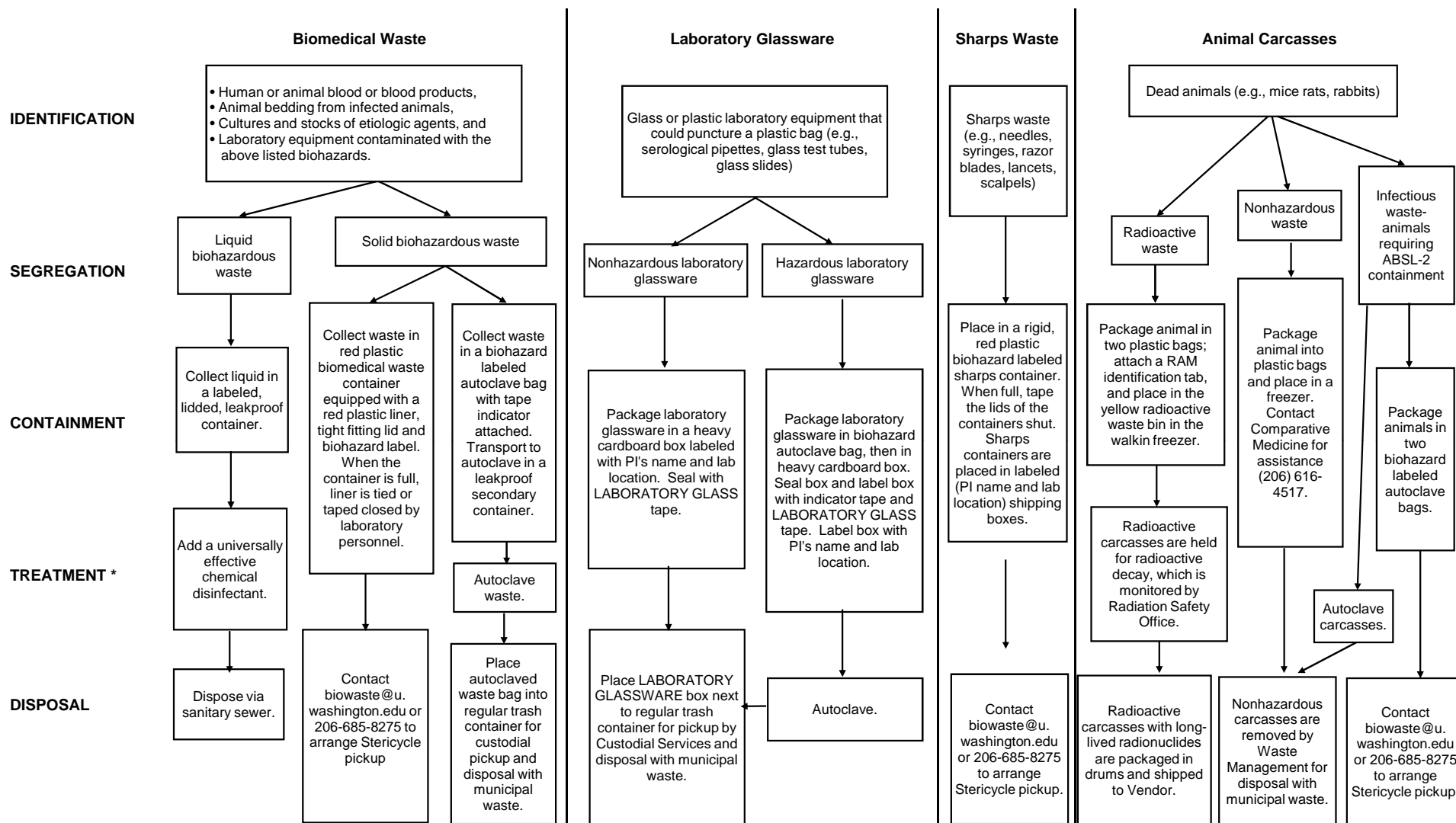


UNIVERSITY OF WASHINGTON MAIN CAMPUS AND LEASED FACILITIES BIOMEDICAL WASTESTREAMS**



* [Biological decontamination guidelines can be found in the UW Biosafety Manual Section IV. D.](#)

** All laboratory facilities must be approved by Environmental Health and Safety; all animal facilities must be approved by the Institutional Animal Care & Use Committee.