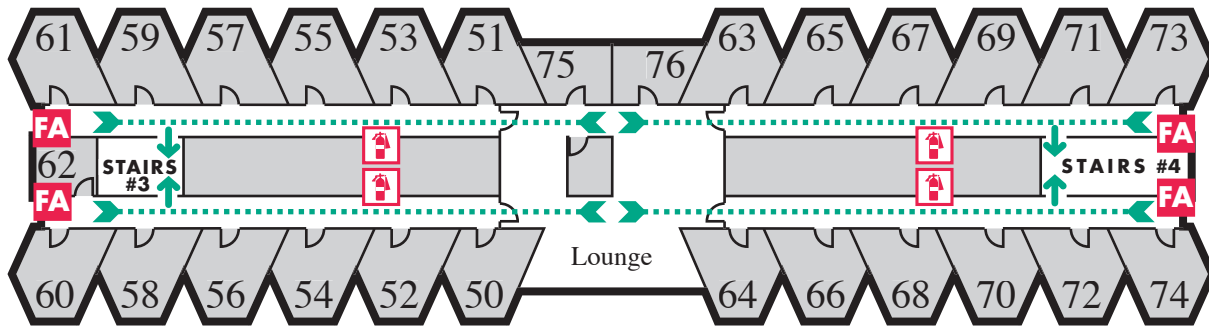


→
EVACUATION
ASSEMBLY
POINT:
Parking Lot N-6

**DO NOT
REMOVE
or DEFACE**



HAGGETT HALL - SOUTH TOWER FLOORS 1, 3, 5, 7, 8

● YOUR ROOM

.... EVACUATION ROUTE

→ FIRE EXIT

🔥 FIRE EXTINGUISHER

FA FIRE ALARM

FIRE SAFETY PRECAUTIONS

- Know the location of the nearest exits.
- Know the location of the fire extinguishers.
- Never smoke on your bed.

IN THE EVENT OF FIRE

- Exit the building to grade.
- Do not wedge or prop open fire exit doors.
- Report all fires even if you assume they are extinguished.
- Always take your key and close your door when you leave your room.

IF THE FIRE IS INSIDE YOUR ROOM:



Leave your room immediately and close the door.

Report the fire by dialing 9-911.

IF THE FIRE IS NOT IN YOUR ROOM:



With the palm of your hand check the door for heat.



or



If the door is hot, remain in your room.

- Seal cracks around doors and vents with towels or clothing.
- Report the fire by dialing 9-911.
- If there is *no smoke* outside your window, hang a sheet or light-colored clothing out the window to alert rescue personnel that you are in the room waiting for help.
- If there is *smoke* outside your window, make yourself visible to firefighters by waving a light-colored object while standing at the window.
- If smoke enters your room, close the window and tie a folded cloth over your nose and mouth.

If the door is cool, slowly open the door, take your room key, close the door and:

- Walk, crawl if the hall is smoky, to the closest exit and proceed to the street.
- Report the fire by dialing 9-911.

If exiting down is not safe, return to your room and follow the procedures for a hot door.

EVACUATION INFORMATION	Earthquake	Power Outage	Hazardous Materials Release	Suspicious Object	Suspicious Person
<p>Evacuate the building using the nearest available exit. Do not use elevators!</p> <p>Take personal belongings (keys, purses, wallets, etc.)</p> <p>Secure any hazardous materials or equipment before leaving.</p> <p>Follow directions given by residential staff.</p> <p>Go to Evacuation Assembly Point (EAP) designated in this building's evacuation plan and on building emergency evacuation signs.</p> <p>Assist persons with disabilities.</p>	<p>Drop, Cover, Hold under a table or desk or against an inside wall—not in a doorway—until the shaking stops.</p> <p>After the shaking stops, check yourself and others for injuries and cautiously evacuate the building.</p> <p>Go to your department or building predetermined Evacuation Assembly Point (EAP).</p> <p>Do not leave the area/campus without reporting your status to someone in charge.</p>	<p>Remain calm; provide assistance to others if necessary.</p> <p>Move cautiously to a lighted area. Exits may be indicated by lighted signs if the emergency power is operating.</p> <p>Turn off and unplug computers and other voltage sensitive equipment.</p> <p>For information about a prolonged outage, tune to radio KIRO 710 AM and/or call UW 206-547-INFO.</p>	<p>If an emergency or if anyone in danger, call 9-911.</p> <p>Move away from the site of the hazard to a safe location.</p> <p>Follow the instructions of emergency personnel.</p> <p>Alert others to stay clear of the area.</p> <p>Notify emergency personnel if you have been exposed or have information about the release.</p>	<p>Do not touch or disturb the object.</p> <p>Call 9-911.</p> <p>Notify your residential services staff.</p> <p>Be prepared to evacuate.</p>	<p>Do not physically confront the person.</p> <p>Do not let anyone into a locked building/office.</p> <p>Do not block the person's access to an exit.</p> <p>Call 9-911 (Provide as much information as possible about the person and their direction of travel).</p>